

SPECIFICATION GUIDE

SLIDING PASSAGE DOOR

INTERIOR SLIDING GLASS DOOR SYSTEM

PART 1 - PRODUCT

1.1 MANUFACTURER

A. **COXUSA**

4755 E. Zinfandel Court, Suite D
Ontario, California 91761
909.545.8900
info@dividersusa.us
www.dividersusa.us

1.2 COMPONENTS

A. Framing, General

1. Material: Aluminum extrusions, 6063-T5 alloy.
2. Finish
 - a. Anodized Aluminum: [**Satin Aluminum.**]
 - b. Wet Paint: [**Black.**] [**White.**] [**Java.**]

B. Top Tracks

1. Material: 17-gauge aluminum, 6063-T5 alloy
Height: 1-1/4"
Width: 1-3/4"
Maximum length: 156"
2. Installation
 - a. [**Surface Mounted**]
3. Channel. [**Single**]

4. Panels
 - a. [**Single**]
 - b. [**Double**]
5. Finish
 - a. Anodized Aluminum. [**Satin Aluminum**]
 - b. Wet Paint. [**Black**] [**White**] [**Java**]

C. Bottom Tracks

1. **No floor tracks required.**

D. Doors

1. Stiles and Rails
 - a. **Vertical stiles**
 Material: 17-gauge aluminum, 6063-T5 alloy
 Height: 1-1/2"
 Width: 1-5/16"
 Maximum length: 193"
 - b. **Horizontal rails (Top and Bottom)**
 Material: 17-gauge aluminum, 6063-T5 alloy
 Height: 1-5/8"
 Width: 1-5/16"
 Maximum length: [**143" Top Rail**] [**156" Bottom Rail**]
 - c. **Maximum panel weight:** 150 lbs
2. Fascia
 Material: 17-gauge aluminum, 6063-T5 alloy
 Height: 2-3/4"
 Maximum length: 156"
3. Mullions
 - a. H-Bar: Glazed-in aluminum bars. [**1.5 inch**] sight line
 - b. Plant-On Strips: [**1 inch**] sight line
 1. [**Single-Sided**] décor strips with adhesive backing.
 2. [**Double-Sided**] décor strips with adhesive backing.

4. L-Bracket
Material: 17-gauge aluminum, 6063-T5 alloy
Height: 2"
Width: 2-1/8"
Maximum length: 156"
5. Spacer Block
Material: Delrin DS100 NC000, injection molded part
Color: Black
Dimensions: 1-1/2" x 1-5/8", 1/4" thick
6. End Cap Assembly
Material: 17-gauge aluminum, 6063-T5 alloy
Dimensions: [**2-3/16" x 2-3/4"**] [**2-1/2" x 2-3/4"**]
[**2-11/16" x 2-3/4"**]
Thickness: 1/4"

E. Glass

1. Monolithic Glass: 3mm thick with safety film backing
 - a. Back-Painting. [**White**] [**Black**]
2. Laminated Glass
 - a. [**White**] laminated glass, 6mm thick with opaque interlayer
3. Mirror: Mirror with safety film backing
4. Monolithic Tempered Glass: [3mm - 6mm]
 - a. Any tempered glass with glazing patterns
[**Acid Etched**] [**Frosted**]

1.3 HARDWARE

- A. Taped-On Handle
Material: 17-gauge aluminum, 6063-T5 alloy
Dimensions: 1" x 3"

B. Handles and Pulls

1. **Recessed Pocket Door Edge Pull (H-485)**

Material: Polycarbonate housing with Zinc AG40A lever pull

Dimensions: 1/2" x 2 5/16" [Pull]. 3/4" x 2 5/8 [Housing]

2. **Recessed Stile Pull (H-514)**

Material: Polycarbonate

Dimensions: 7/8" x 2-5/8" [Depth of pull: 5/8]

3. **Sliding Passage Door Pull (H-588)**

Material: 6063-T5 aluminum

Dimensions: [See attached technical drawing]

4. **ADA Handle (H-625)**

Material: 6063-T5 aluminum

Dimensions: [See attached technical drawing]

C. Top Roller Assembly

Each top roller system consists of 2 top rollers with 4 nylon wheels with ball bearing axles. Roller assembly features an anti-jump design that provides a 3/4" vertical adjustability.

D. Floor Mounted Guide

Material: Stamped metal roller assembly using 15-gauge zinc plated steel with two roller bearings over-molded with rubber.

Installation: Attached to the **[floor]** **[wall]**

Application: **[1 panel system]** **[2 panel system]**

E. Track Stop

1.4 FABRICATION AND ASSEMBLY

A. Door Design

1. 2-Lite. Divided horizontally into 2 lights
2. 3-Lite. Divided horizontally into 3 lights
3. 4 Lite. Divided horizontally into 4 lights
4. 5 Lite. Divided horizontally into 5 lights

B. Shop Assembly

Fabricate frame components and doors to finished sizes in shop except provide field splicing at locations indicated in shop drawings to accommodate handling and access limitations.

1.5 ACCESSORIES

- a. Bumper /Screw Head Cover
- b. Glazing Vinyl

PART 2 - EXECUTION

2.1 EXAMINATION

Verify that openings and substrates are acceptable for installation of work in this section.

2.2 INSTALLATION

Install systems according to shop drawings and manufacturer's installation instructions.

2.3 ADJUSTING, CLEANING AND PROTECTION

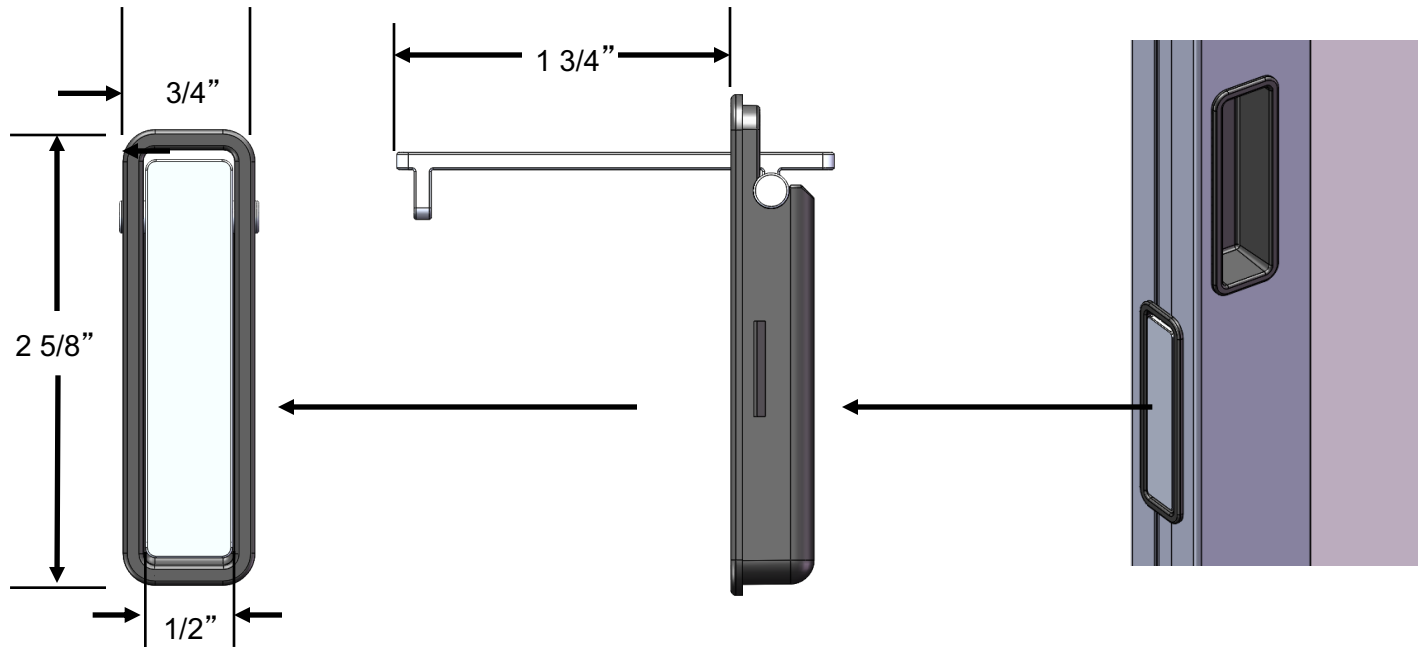
- a. Adjust doors for smooth operation.
- b. Comply with manufacturer's written recommendations for cleaning and maintenance.
- c. Clean aluminum and glass surfaces immediately after installing sliding doors.
- d. Protect surfaces from impact and from contact with contaminating substances resulting from other construction operations.
- e. Clean immediately before substantial completion

2.4 CLOSEOUT REQUIREMENTS

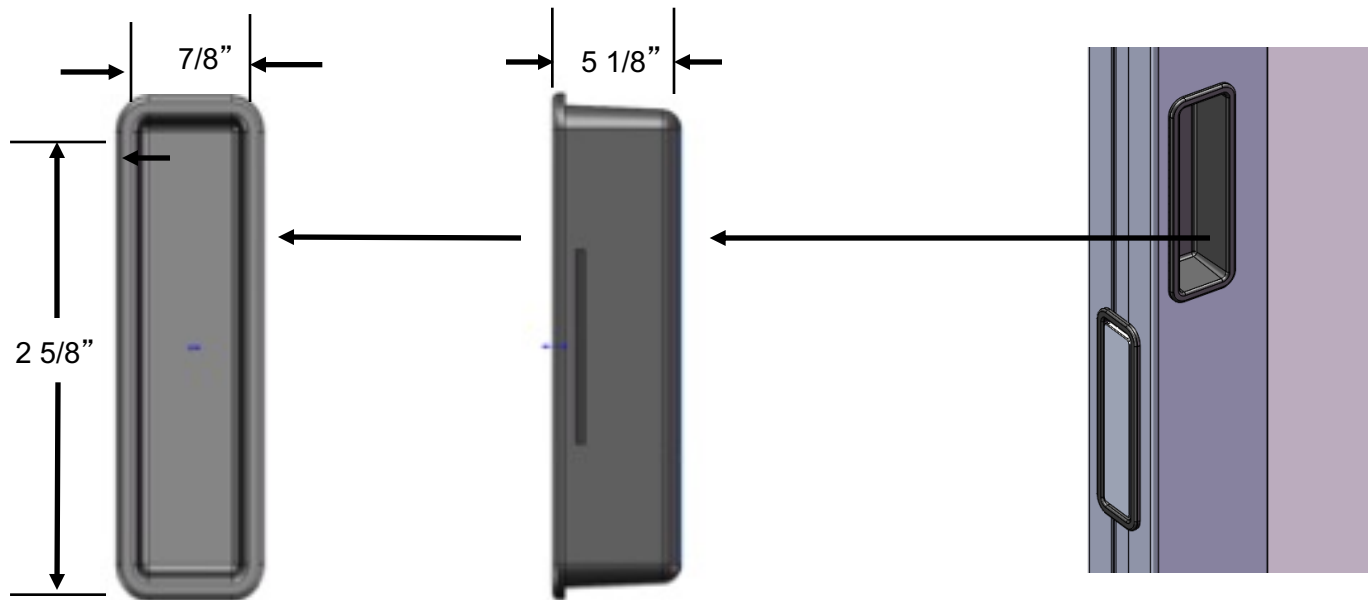
Deliver executed Warranty.

END OF SECTION

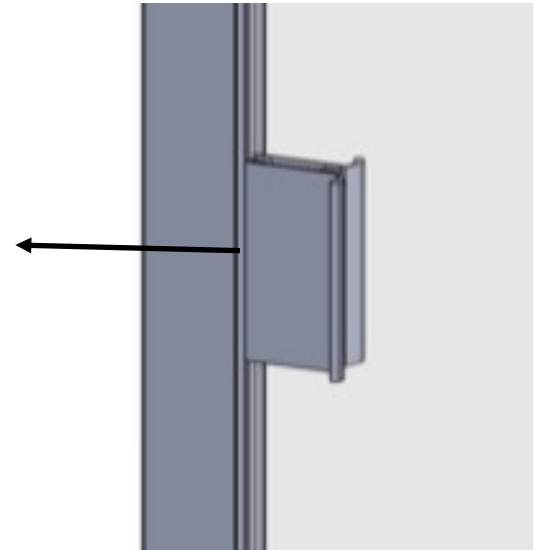
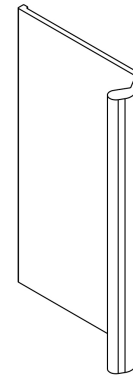
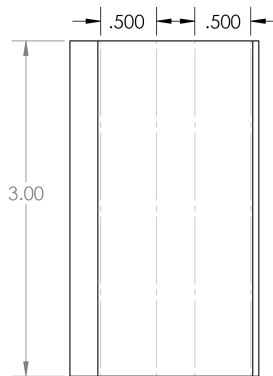
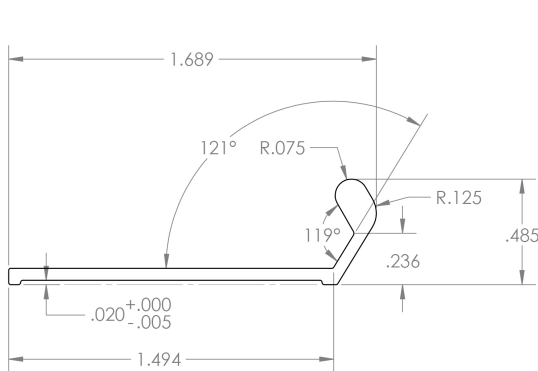
TECHNICAL DRAWING
Recessed Pocket Door Edge Pull (H-485)



TECHNICAL DRAWING
Recessed Stile Pull (H-514)



TECHNICAL DRAWING Sliding Passage Door Pull (H-588)



TECHNICAL DRAWING ADA Handle (H-625)

