

SPECIFICATION GUIDE

SLIDING CLOSET DOOR

INTERIOR SLIDING GLASS DOOR SYSTEM

PART 1 - PRODUCT

1.1 MANUFACTURER

A. **COXUSA**

4755 E. Zinfandel Court, Suite D
Ontario, California 91761
909.545.8900
info@dividersusa.us
www.dividersusa.us

1.2 COMPONENTS

A. **Framing, General**

1. Material: Aluminum extrusions, 6063-T5 alloy.
2. Finish
 - a. Anodized Aluminum [**Satin Aluminum**]
 - b. Wet Paint [**Black**] [**White**] [**Java**]

B. **Top Channels**

Material: 17-gauge aluminum, 6063-T5 alloy.

Height: 2-1/8"

Width: [**Single** 1-5/8"] [**Double** 3-3/16"] [**Triple**: 4-3/4"]
[**Quad** 6-7/16"]

Maximum Length: 291" with number of tracks required for door operation.

2. Installation
 - a. [**Mounted under a header**]
 - b. [**Mounted to a ceiling**]
3. Channels. [**Single**] [**Double**] [**Triple**] [**Quad**]
One-piece track with number of channels required for door operation.
4. Finish
 - a. Anodized Aluminum. [**Satin Aluminum**]
 - b. Wet Paint. [**Black**] [**White**] [**Java**]

C. **Bottom Tracks**

1. Standard. [**Single**] [**Double**] [**Triple**] [**Quad**]
Material: 17-gauge aluminum, 6063-T5 alloy
Height: 3/8"
Width: [**Single** 1-3/4"] [**Double** 2-9/16"] [**Triple** 4-1/8"]
 [**Quad** 6-3/16"]
Maximum length: [**Single** 291"] [**Double** 216"] [**Triple** 288"]
 [**Quad** 288"]
2. **ADA** Compliant. [**Double**] [**Triple**] [**Quad**]
Material: 17-gauge aluminum, 6063-T5 alloy
Height: 3/8".
Width: [**Double** 3"] [**Triple** 4-9/16"] [**Quad** 6-1/8"]
Maximum length: [**Double** 216"] [**Triple** 288"] [**Quad** 288"]
3. Finish
 - a. Anodized Aluminum. [**Satin Aluminum**]
 - b. Wet Paint. [**Black**] [**White**] [**Java**]

D. Doors

1. Stiles and Rails

a. **Vertical stiles**

Material: 17-gauge aluminum, 6063-T5 alloy

Height: 1-1/2"

Width: 1-5/16"

Maximum length: 193"

b. **Horizontal rails**

Material: 17-gauge aluminum, 6063-T5 alloy.

Height: 1-5/8"

Width: 1-5/16"

Maximum Length: 143"

c. **Maximum panel weight:** 200 lbs.

2. Mullions

a. H-Bar: Glazed-in aluminum bars. [**1.5 inch**] sight line.

b. Plant-On Strips: [**1 inch**] sight line.

1. [**Single-Sided**] décor strips with adhesive backing.

2. [**Double-Sided**] décor strips with adhesive backing.

C. Glass

1. Monolithic Glass: 3mm thick with safety film backing.

a. Back-Painted. [**White**] [**Black**]

2. Laminated Glass

a. [**White**] laminated glass, 6mm thick with opaque interlayer.

3. Mirror: Mirror with safety film backing.

4. Monolithic Tempered Glass. [**3mm - 6mm**]

a. Tempered glass with glazing patterns

[**Acid Etched**] [**Frosted**]

1.3 HARDWARE

A. Taped-On Handle

Material: 17-gauge aluminum, 6063-T5 alloy.

Dimensions: 1" x 3"

B. Handles and Pulls

1. **Recessed Pocket Door Edge Pull (H-485)**

Material: Polycarbonate housing with Zinc AG40A lever pull.

Dimensions: 1/2" x 2 5/16" [Pull] 3/4" x 2 5/8 [Housing]

2. **Recessed Stile Pull (H-514)**

Material: Polycarbonate.

Dimensions: 7/8" x 2-5/8" [Depth of pull: 5/8]

3. **Sliding Passage Door Pull (H-588)**

Material: 6063-T5 aluminum

Dimensions: [See attached technical drawing]

4. **ADA Handle (H-625)**

Material: 6063-T5 aluminum

Dimensions: [See attached technical drawing]

C. Twin Wheel Top Guide

Material: Rubber over-molded steel bearings attached to a
16-gauge galvanized steel using steel rivets.

D. Bottom Rollers

Material:

1. Housing: Acetal with 15% glass fill.

2. Wheel: Steel ball bearing over molded with Acetal.

Adjustment: Internal gear used for height adjustments.

Maximum height adjustment: 7/8".

D. Fixed Panel Stop

Material: Polycarbonate.

Dimensions: 4" x 1-11/16" x 1-7/16".

1.4 FABRICATION AND ASSEMBLY

- A. Door Design
 - 1. 2-Lite: Divided horizontally into 2 lights.
 - 2. 3-Lite: Divided horizontally into 3 lights.
 - 3. 4 Lite: Divided horizontally into 4 lights.
 - 4. 5 Lite: Divided horizontally into 5 lights.
- B. Shop Assembly

Fabricate frame components and doors to finished sizes in shop except provide field splicing at locations indicated in shop drawings to accommodate handling and access limitations.

1.5 ACCESSORIES

- a. Bumper /Screw Head Cover
- b. Glazing Vinyl

PART 2 - EXECUTION

2.1 EXAMINATION

Verify that openings and substrates are acceptable for installation of work on this section.

2.2 INSTALLATION

Install systems according to shop drawings and manufacturer's installation instructions.

2.3 ADJUSTING, CLEANING AND PROTECTION

- a. Adjust doors for smooth operation
- b. Comply with manufacturer's written recommendations for cleaning and maintenance.

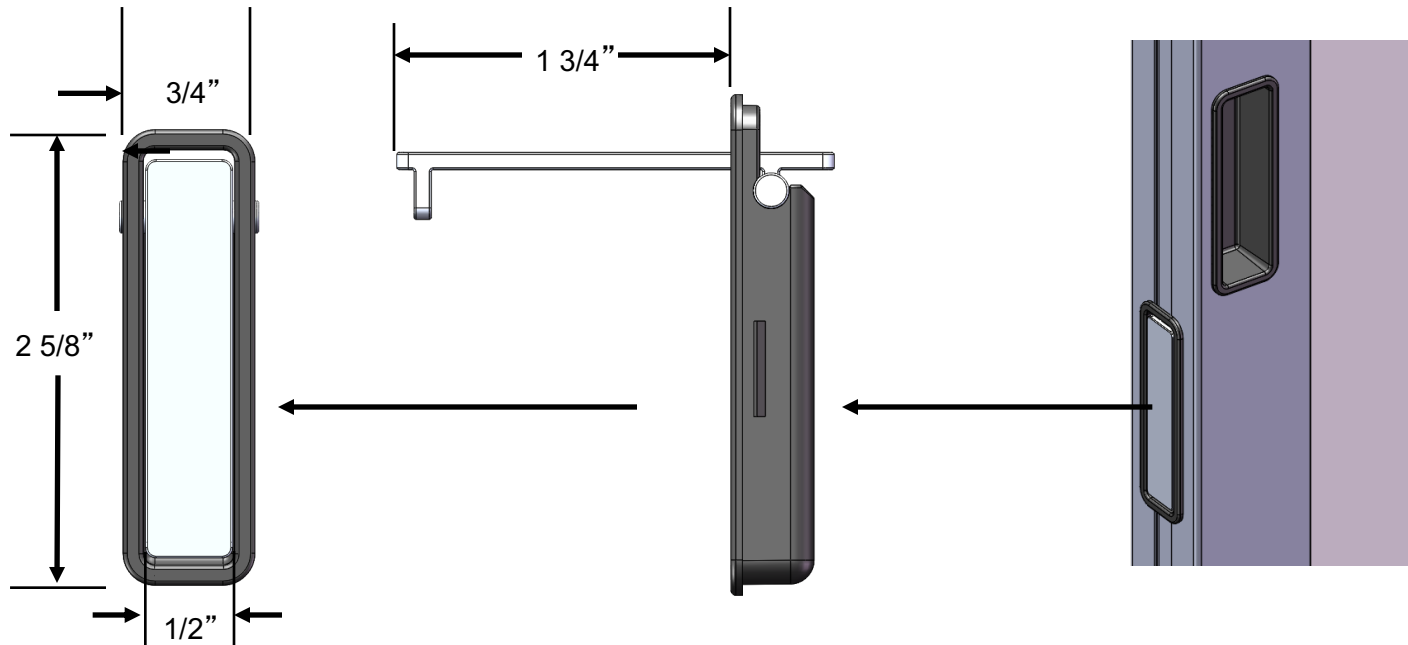
- c. Clean aluminum and glass surfaces immediately after installing sliding doors.
- d. Protect surfaces from impact and from contact with contaminating substances resulting from other construction operations.
- e. Clean immediately before substantial completion.

2.4 CLOSEOUT REQUIREMENTS

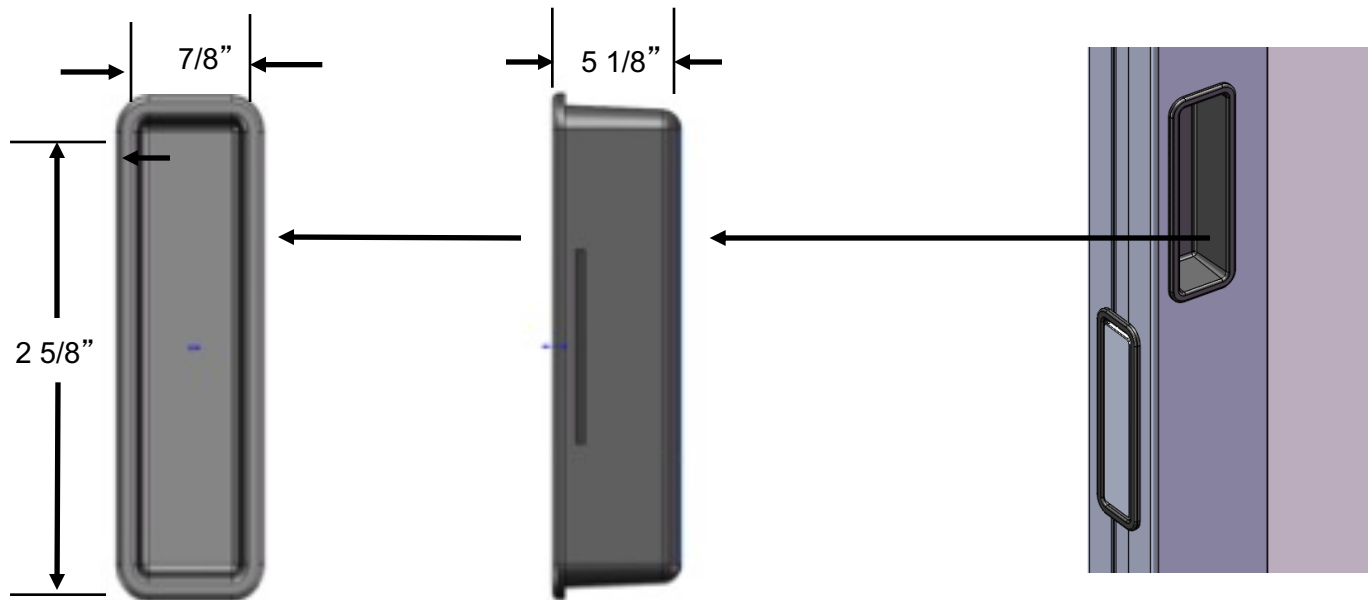
Deliver executed Warranty.

END OF SECTION

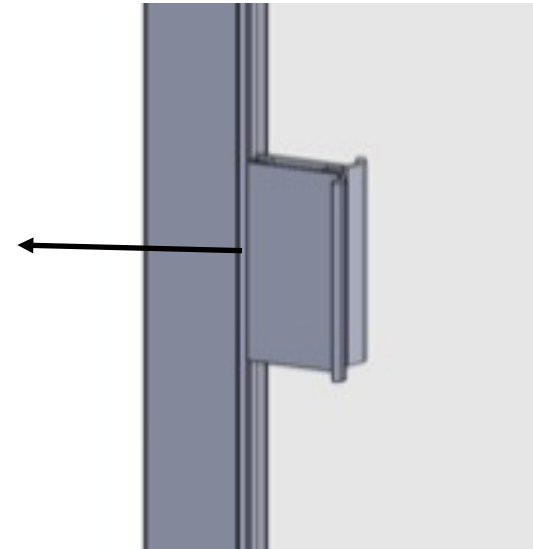
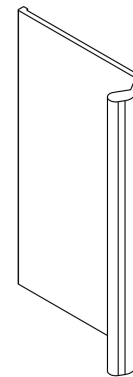
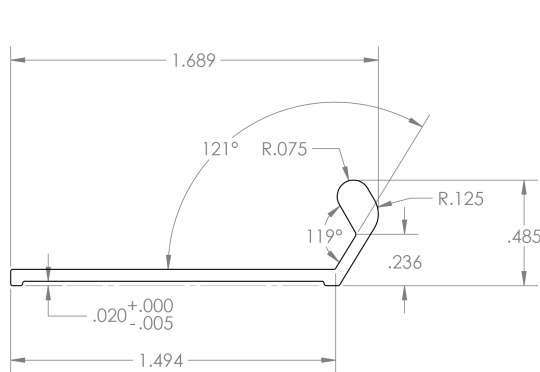
TECHNICAL DRAWING
Recessed Pocket Door Edge Pull (H-485)



TECHNICAL DRAWING
Recessed Stile Pull (H-514)



TECHNICAL DRAWING Sliding Passage Door Pull (H-588)



TECHNICAL DRAWING
ADA Handle (H-625)

